

# 16 *Gloriosa superba* Linn.

(Langali)

Drug consists of dried tuber of *Gloriosa superba* Linn. (A, B & C); Fam. Liliaceae. The plant is a branched herbaceous climber, common in low forests almost throughout India including Andaman Islands up to an altitude of 1600 m.



Plant



Fresh tuber



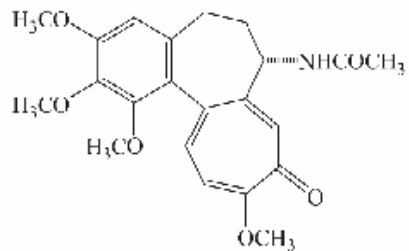
Dried transversely cut pieces of the root

*Gloriosa superba* Linn.

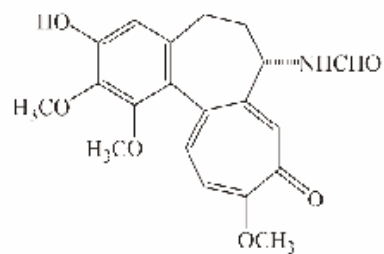
## Chemical Constituents

### Major

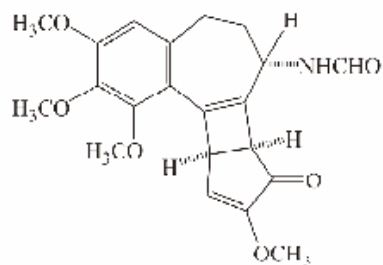
Colchicine.



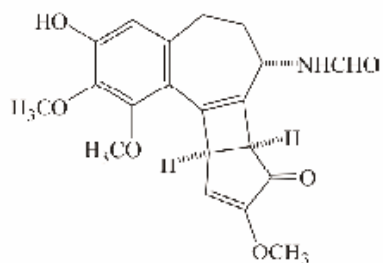
Colchicine



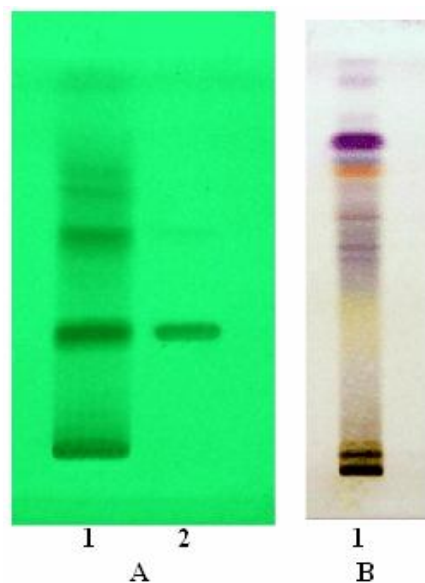
O<sup>2</sup>-Demethyl-N-formyldeacetylcolchicine



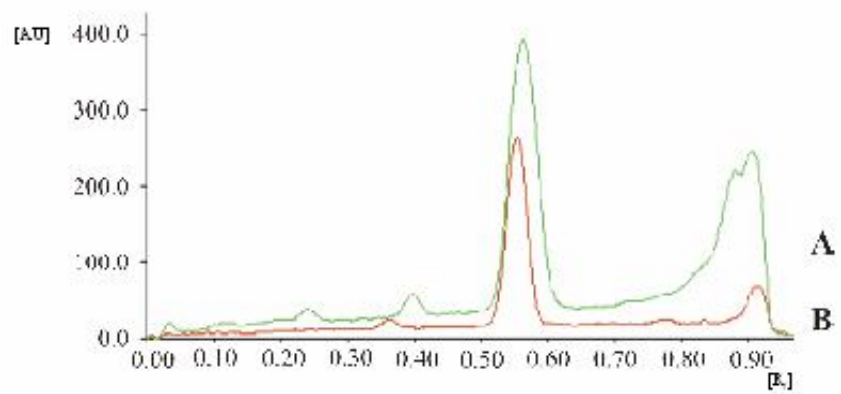
N-Formyldeacetyl-β-lumicolchicine



O<sup>2</sup>-Demethyl-N-formyldeacetyl-β-lumicolchicine



TLC profile of test solution of *Gloriosa superba* tuberous root. **A.** UV 254 nm; **B.** Derivatized with anisaldehyde-sulphuric acid reagent. **1:** Test solution; **2:** Colchicine standard.



HPTLC densitometric scan at 358 nm. **A**. Test solution of *Gloriosa superba* tuberous root; **B**. Colchicine standard.