

16 *Jasminum grandiflorum* Linn.

(Jati)

Drug consists of leaf of *Jasminum grandiflorum* Linn. (syn. *J. officinale* Linn. forma *grandiflorum* (Linn.) Kobuski) (A, B & C); Fam. Oleaceae. The plant is a subscandent shrub, found throughout India, in forests up to 2,500 m, also extensively cultivated.



A. Aerial flowering branch



B. Branch

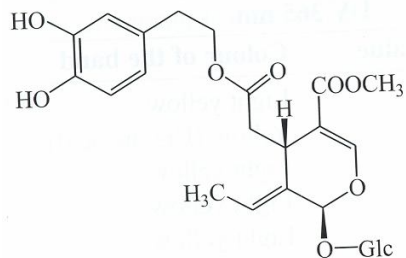
C. Compound leaf

Jasminum grandiflorum Linn.

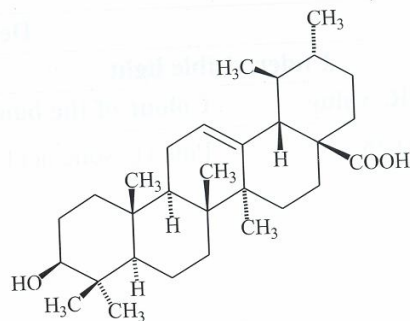
Chemical Constituents

Major

Oleuropein, ligstroside, demethyloleuropein, (2''R)- and (2''S)-2''-methoxyoleuropein; ursolic acid.

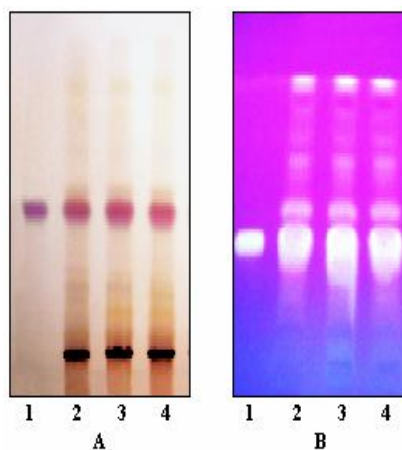


Oleuropein

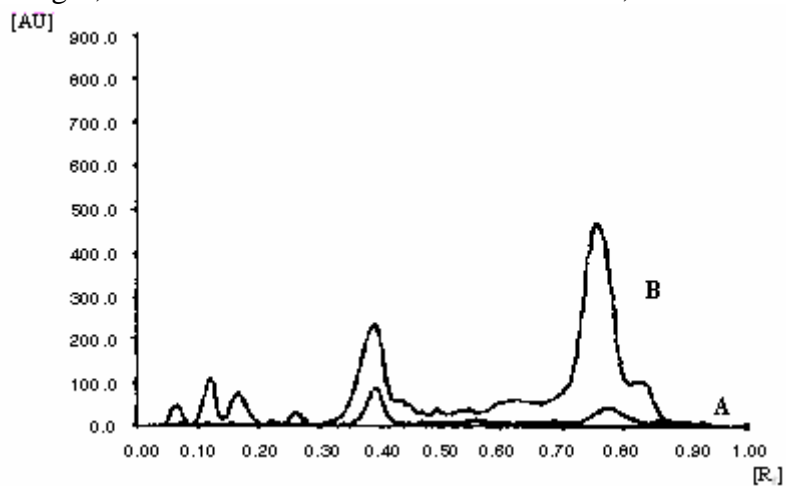


Ursolic acid

TLC/HPTLC Details



TLC profile of test solution of methanol extract of *Jasminum grandiflorum* leaf. **A.** Visible light; **B.** UV 365 nm. **1:** Ursolic acid standard; **2-4:** Test solution.



HPTLC densitometric scan at 200 nm. **A.** Ursolic acid standard; **B.** Test solution of methanol extract of *Jasminum grandiflorum* leaf.