

# 15 *Hemidesmus indicus* (Linn.) R.Br. (Anantamula)

Drug consists of dried root of *Hemidesmus indicus* (Linn.) R.Br. (A, B & C); Fam. Asclepiadaceae, commonly known as 'Indian Sarsaparilla'. A perennial climber and growing widely in upper Gangetic plains and eastwards to Bengal and from Central to South India.



A. Plant



B. Flowering twig



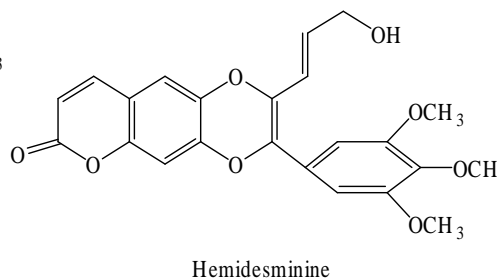
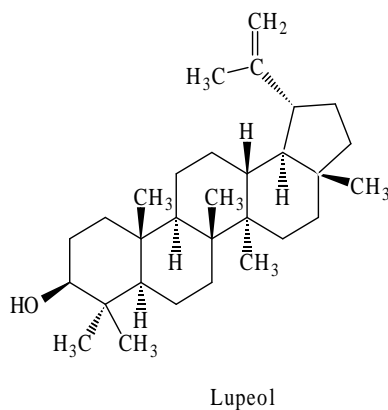
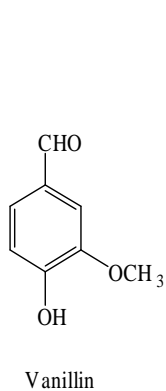
C. Root

*Hemidesmus indicus* (Linn.) R.Br.

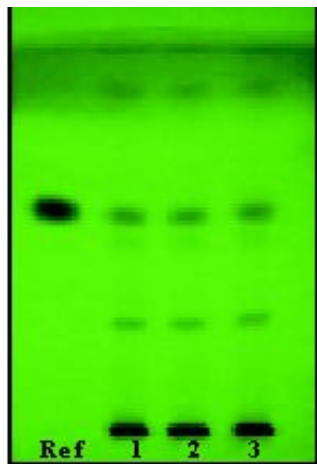
## Chemical Constituents

### Major

4-Hydroxy 3-methoxy benzaldehyde (vanillin), lupeol.



## TLC/ HPLC Details

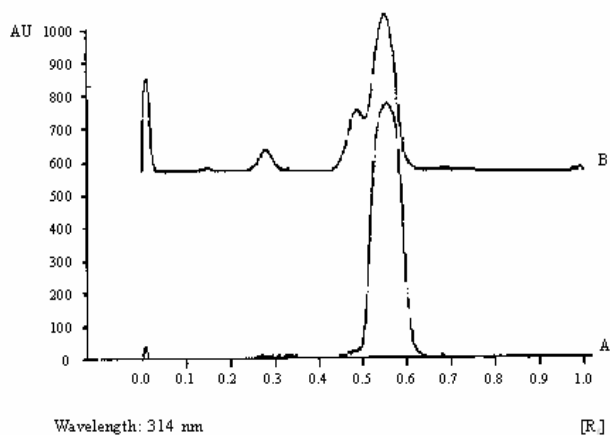


A

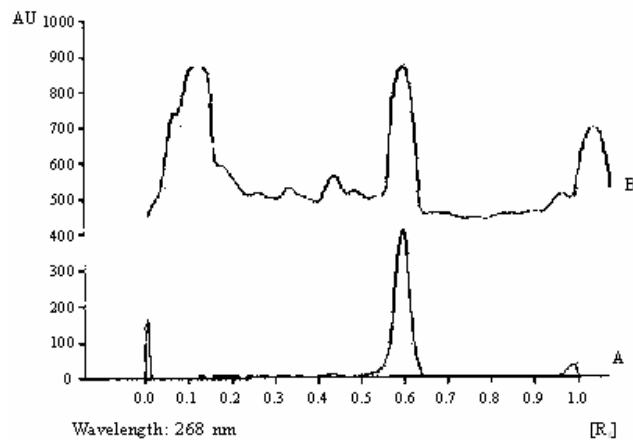


B

TLC profile of test solution of *Hemidesmus indicus* root.  
A. Solvent system I. Ref : Vanillin standard; 1-3 : Test solution.  
B. Solvent system II. Ref : Lupeol standard; 1-3 : Test solution.



TLC densitometric scan at 314 nm.  
A. Vanillin standard; B. Test solution of *Hemidesmus indicus* root extract.



TLC densitometric scan at 600 nm.  
A. Lupeol standard; B. Test solution of *Hemidesmus indicus* root extract.