

# 15 *Ficus hispida* Linn.f.

(Kakodumbara)

Drug consists of dried fruit of *Ficus hispida* Linn. f. (syn. *F. oppositifolia* Roxb.) (A, B & C); Fam. Moraceae. A moderate sized tree or shrub distributed throughout India from Jammu & Kashmir eastwards to West Bengal, Central and South India and Andaman Islands.



A. Plant



Fresh fruits



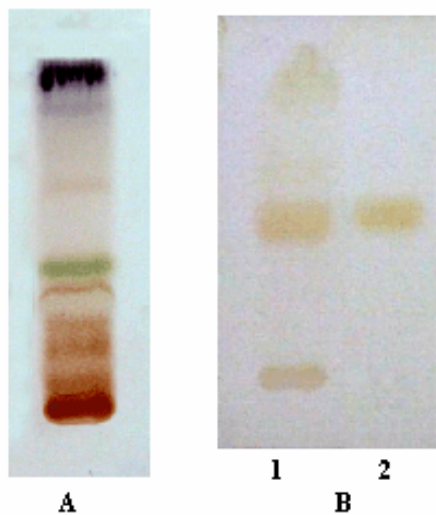
Dried fruits (longitudinally cut)

## Chemical Constituents

### Major

Glucose, fructose, sucrose.

## TLC Details



TLC profile of test solution of *Ficus hispida* fruit. **A.** Solvent system I – Sprayed with anisaldehyde-sulphuric acid reagent; **B.** Solvent system II – Sprayed with aniline hydrogen phthalate reagent. **1:** Test solution; **2:** D-Fructose standard.