

15 *Cinnamomum camphora* (Linn.) Presl (Karpura)

Drug consists of dried leaf and stem bark of *Cinnamomum camphora* (Linn.) Presl (Plate 15.1 A, B & C); Fam. Lauraceae. The plant is a large, evergreen tree, native to China and Japan, introduced and cultivated in India as an ornamental and as a source of camphor.



A. Twigs



B. Leaves



C. Stem bark; a. Outer surface b. Inner surface

Plate 15.1 *Cinnamomum camphora* (Linn.) Presl

Chemical Constituents

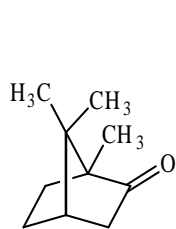
Major

Stem bark

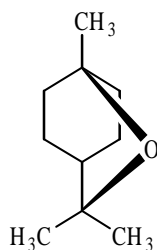
Camphor, 1,8-cineole, α -pinene.

Leaf

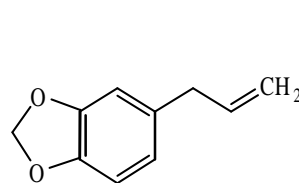
Camphor (72-87%) and limonene.



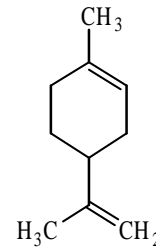
Camphor



1,8-Cineole



Safrole



Limonene