

# 15 *Illicium griffithii* Hook. f. & Thoms.

Drug consists of fully mature and dried ripe fruit of *Illicium griffithii* Hook. f. & Thoms. (A & B); Fam. Illiciaceae. A large shrub, 3 to 5 m in height; found at an altitude of 1200 to 1800 m in Arunachal Pradesh, Manipur, Meghalaya, Nagaland, Bangladesh, Bhutan and Myanmar.



**A. Fruit**

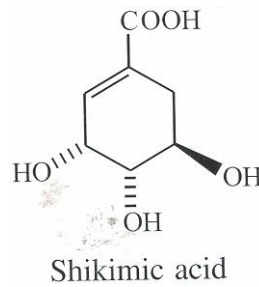
**B. Dried fruit and separated follicles**

*Illicium griffithii* Hook.f. & Thoms.

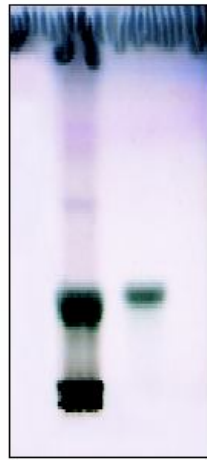
## Chemical Constituents

### Major

Linalool, shikimic acid.

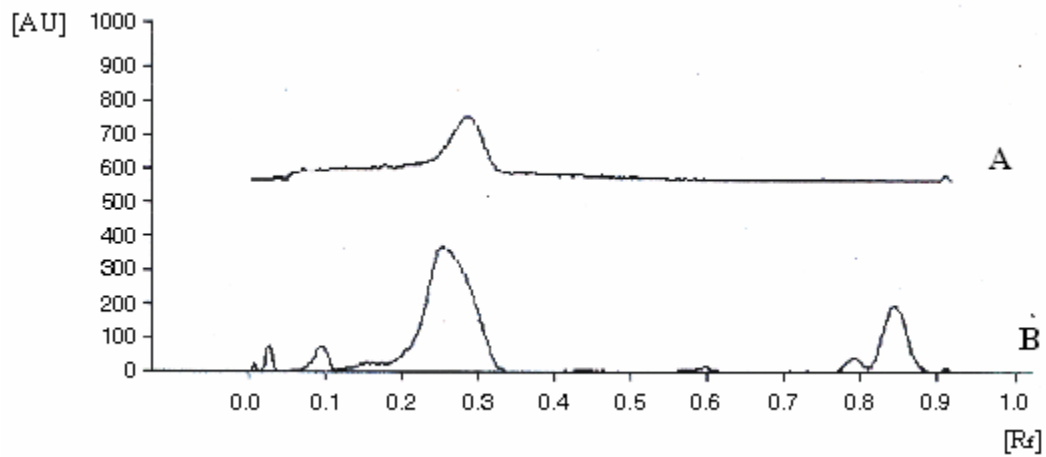


## TLC/HPTLC Details



1 2

TLC profile of test solution of ethanol extract of *Illicium griffithii* fruit. **1**: Test solution; **2**: Shikimic acid standard.



HPTLC densitometric scan at 254 nm. **A**. Shikimic acid standard; **B**. Test solution of ethanol extract of *Illicium griffithii* fruit .