

14 *Euphorbia tirucalli* Linn. (Snuhibheda)

Drug consists of dried stem of *Euphorbia tirucalli* Linn.; Fam. Euphorbiaceae. An erect shrub or small tree widely distributed in hotter parts of India and planted as a hedge plant in gardens and along cultivated fields.

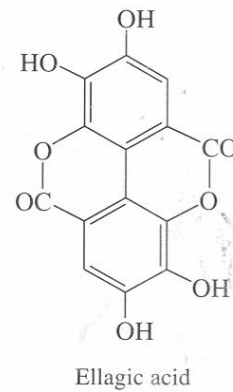
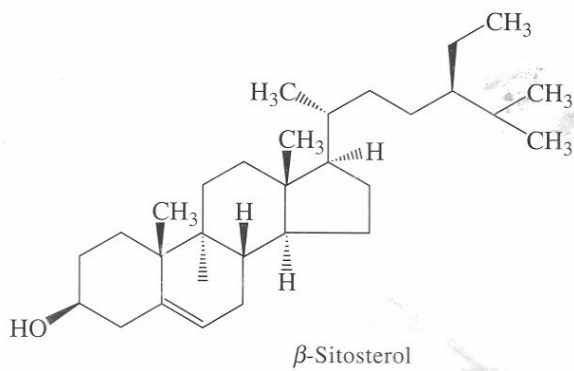


Euphorbia tirucalli Linn.

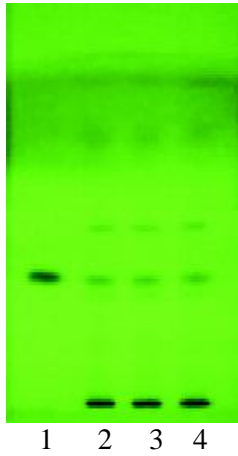
Chemical Constituents

Major

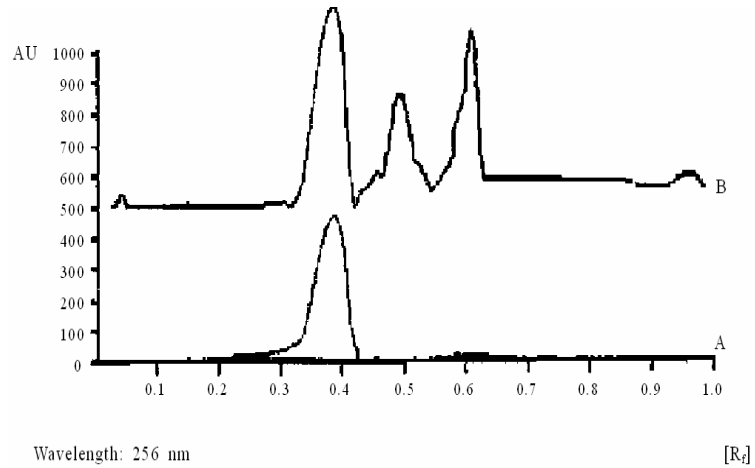
Ellagic acid¹ (4,4',5,5',6,6'-hexahydrodiphenic acid 2,6,2',6'-dilactone).



TLC/ HPLC Details



TLC profile of test solution of *Euphorbia tirucalli* stem extract at 254 nm. **1** : Ellagic acid standard; **2-4** : Test solution.



TLC densitometric scan at 256 nm.
A. Ellagic acid standard;
B. Test solution of *Euphorbia tirucalli* stem extract.