

## 14 *Hygrophila auriculata* (K. Schum.) Heine (Kokilakwa)

Drug consists of dried root of *Hygrophila auriculata* (K. Schum.) Heine (syn. *Asteracantha longifolia* (Linn.) Nees; *Hygrophila schulli* (Ham.) Almeida; *H. spinosa* T. Anders) (A, B & C); Fam. Acanthaceae. A spiny, stout, annual herb, with reddish brown, hairy branches, swollen nodes encircled by thorns and leaves. The herb is commonly found growing in marshy areas, wetlands and along watercourses throughout India.



A. Flowering twig



B. Entire plant



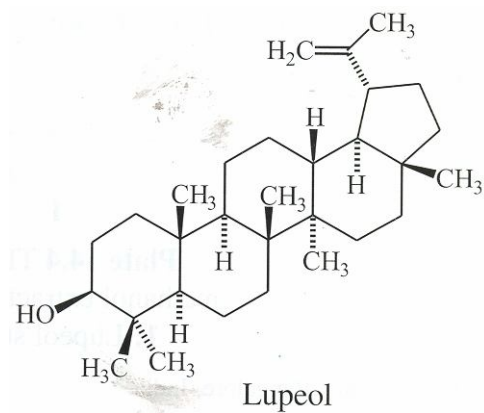
C. Dried roots

*Hygrophila auriculata* (K. Schum.) Heine

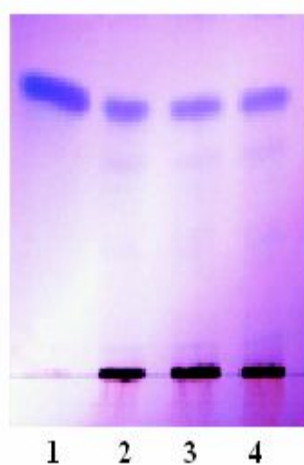
## Chemical Constituents

### Major

Lupeol, lupenone, hygrosterol.

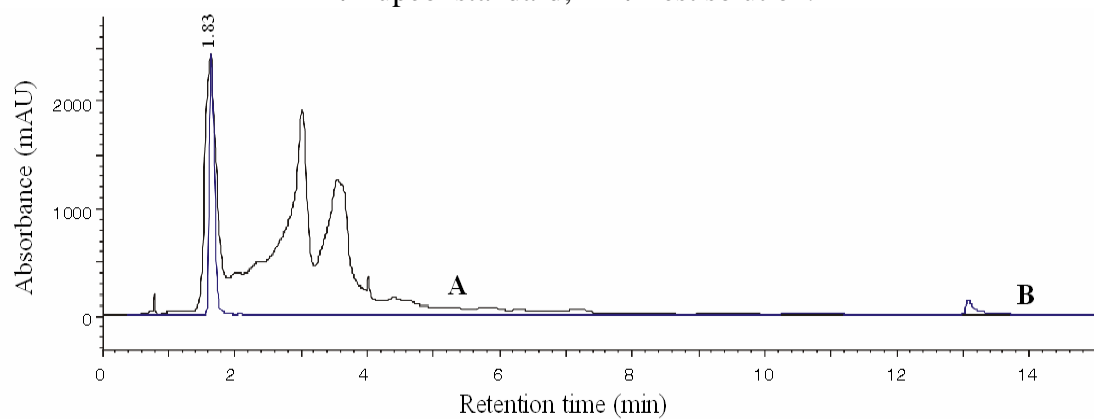


### TLC Details



TLC profile of test solution of methanol extract of *Hygrophila auriculata* root.

**1:** Lupeol standard; **2-4:** Test solution.



HPLC chromatogram. **A.** Test solution of methanol extract of *Hygrophila auriculata* root; **B.** Lupeol standard.