

## 13 *Euphorbia prostrata* W.Ait. (Dugdhika bheda)

Drug consists of the whole plant of *Euphorbia prostrata* W.Ait.; Fam. Euphorbiaceae. A branched, prostrate, fleshy, spreading milky weed growing throughout India, in plains.

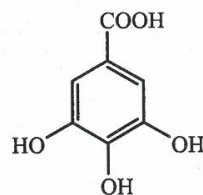


*Euphorbia prostrata* W.Ait.

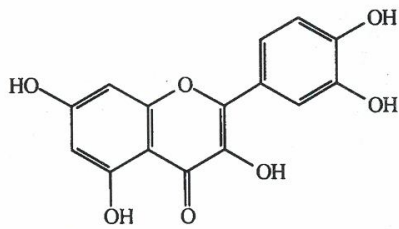
### Chemical Constituents

#### Major

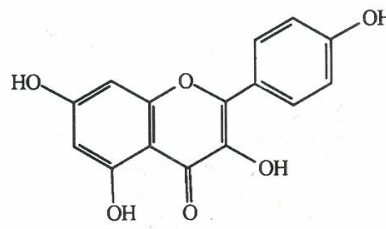
Gallic acid



Gallic acid

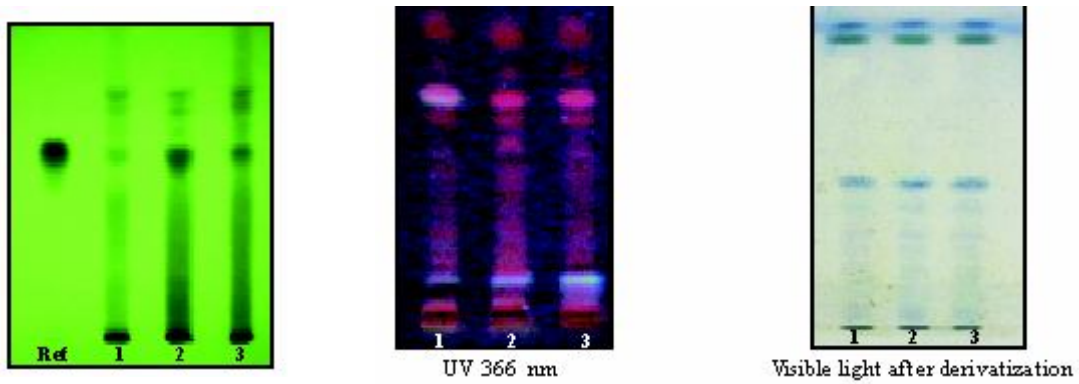


Quercetin



Kaempferol

## TLC/ HPLC Details

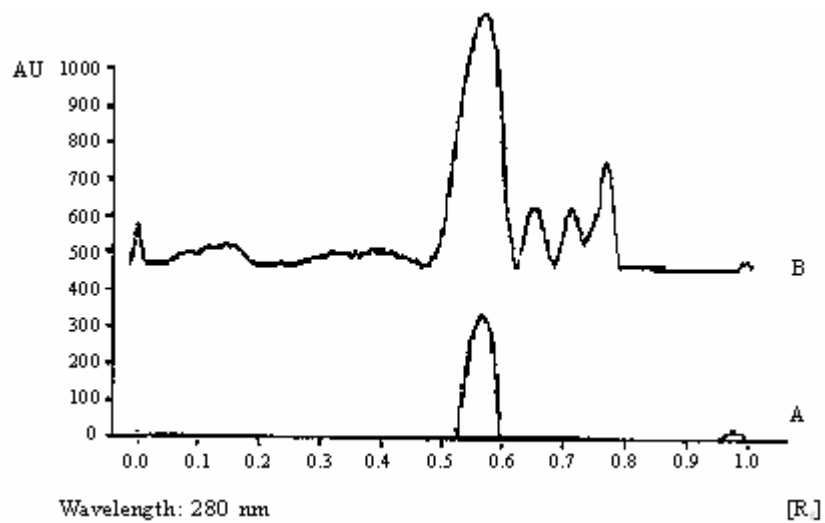


TLC profile of test solution of *Euphorbia prostrata* whole plant extract.

**Ref:** Gallic acid standard; **1-3:** Test solution.

TLC profile of test solution of *Euphorbia prostrata* whole plant extract.

**1-3 :** Test solution.



TLC densitometric scan at 280 nm. **A.** Gallic acid standard; **B.** Test solution of *Euphorbia prostrata* whole plant extract.