

13 *Garcinia indica* (Thouars) Choisy (Vrkwamla)

Drug consists of the dried, split or broken pieces of mature but not fully ripe fruit of *Garcinia indica* (Thouars) Choisy (A , B & C); Fam. Clusiaceae. A slender evergreen tree with drooping branches; endemic to India in the tropical evergreen rain forests of Western Ghats of Maharashtra, Goa and Karnataka, often cultivated.



A. Flowering and fruiting twig



B. Fresh fruits



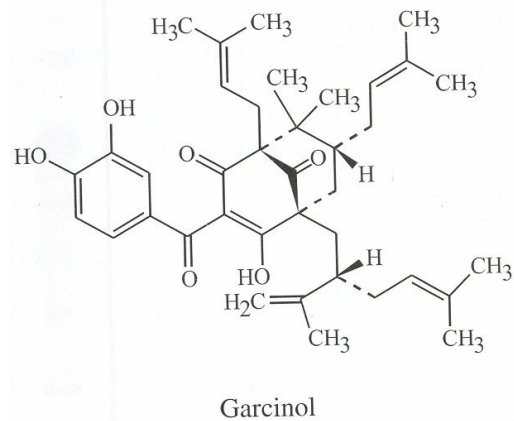
C. Dried fruits and seeds

Garcinia indica (Thouars) Choisy

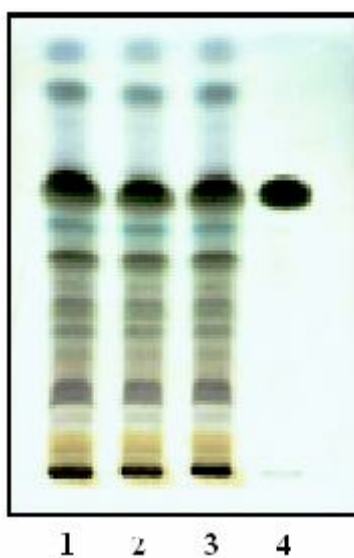
Chemical Constituents

Major

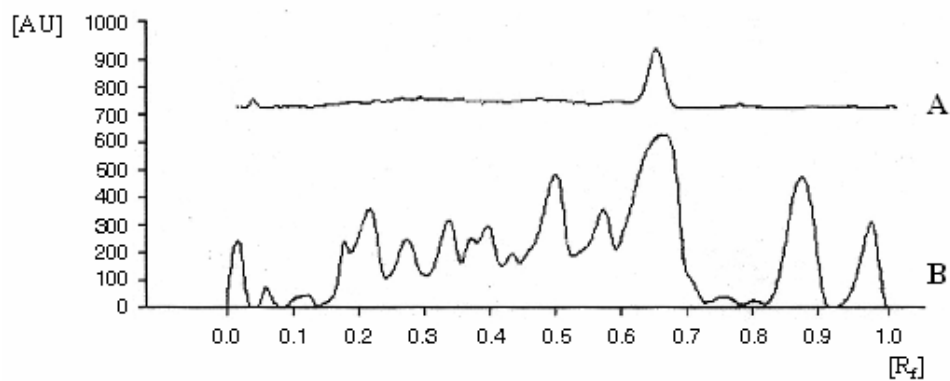
Garcinol, isogarcinol.



TLC/HPTLC Details



TLC profile of test solution of ethanol extract of *Garcinia indica* fruit. **1-3:** Test solution; **4:** Garcinol standard.



HPTLC densitometric scan at 254 nm. **A:** Garcinol standard; **B:** Test solution of ethanol extract of *Garcinia indica* fruit.