

13 *Datura metel* Linn.

(Dhattura)

The drug consists of leaf and seed of *Datura metel* Linn. (syn. *D. fastuosa* Linn.) (Plate 13.1 A,B,C & D); Fam. Solanaceae. An annual under shrub with purple tinged flowers, two or more whorled corolla and tuberculate fruits, occasionally found growing along the waste places all over India.



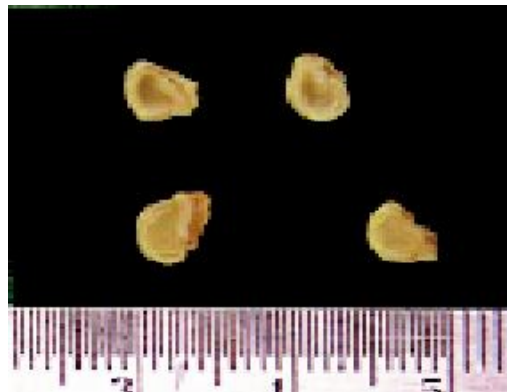
Flowering and fruiting twigs



Leaves



A. Seeds



B. Enlarged seeds

Plate 13.1 *Datura metel* Linn.

Chemical Constituents

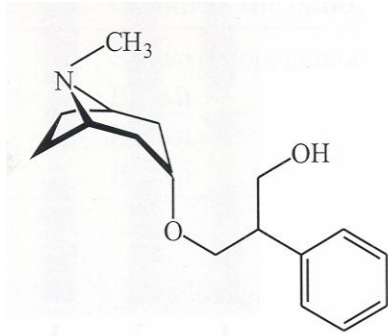
Major

Leaf

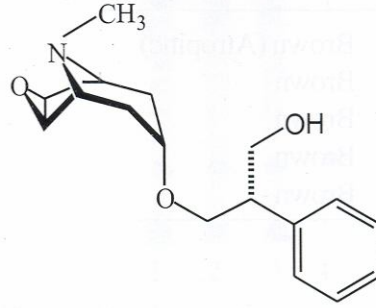
Atropine.

Seed

Scopolamine, atropine.



Atropine



Scopolamine