

12 *Digitalis lanata* Ehrh. (Hritpatri)

Drug consists of dried leaf of *Digitalis lanata* Ehrh. (A & B); Fam. Scrophulariaceae. It is a biennial or perennial herb native to central and South-eastern Europe. In India, it is distributed in temperate Himalayas up to 2000 m from Kashmir to Uttranchal¹.



A. Flowering plant

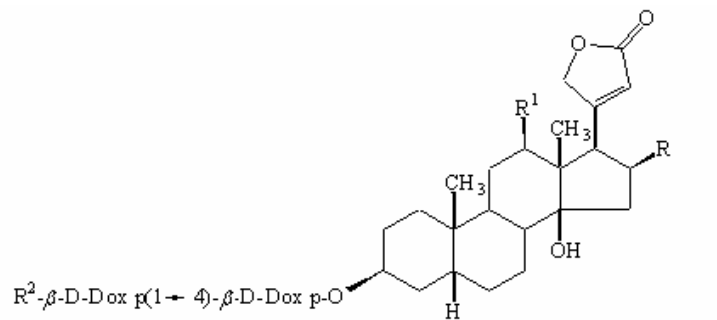
B. Dried leaves

Digitalis lanata Ehrh.

Chemical Constituents

Major

Cardiac glycosides (1 to 1.4 per cent): digitoxin, digoxin and lanatoside C.



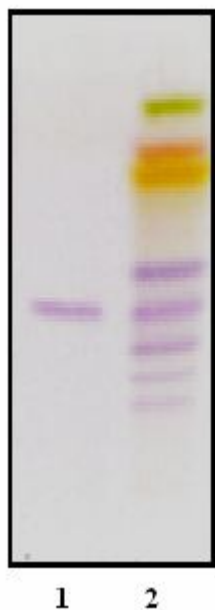
Primary Glycoside	Secondary Glycoside	R	R ¹
Lanatoside A	Digitoxin	H	H
Lanatoside B	Gitoxin	OH	H
Lanatoside C	Digoxin	H	OH
Lanatoside D	Diginatin	OH	H

Lanatoside E	Gitalexin	—O—C(=O)—H	H
--------------	-----------	---------------------	---

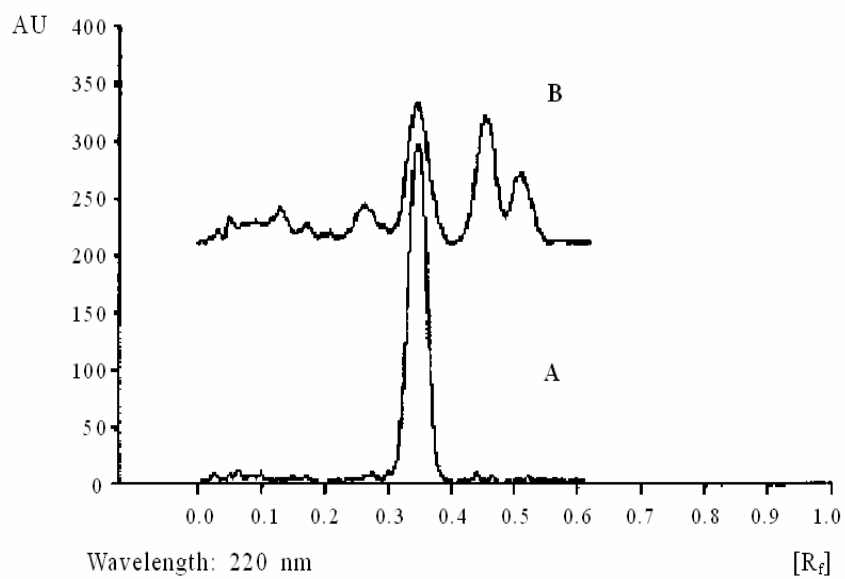
Primary glycosides : R² = Glc-AcDox p

Secondary glycosides : R² = Dcox p

TLC/ HPLC Details



TLC profile of test solution of *Digitalis lanata* leaf.
1 : Digoxin standard;
2 : Test solution.



TLC densitometric scan at 220 nm. **A**. Digoxin standard
B. Test solution of *Digitalis lanata* leaf extract.