

12 *Curcuma aromatica* Salisb. (Vanaharidra)

Drug consists of dried transversely cut pieces of rhizome of *Curcuma aromatica* Salisb. (A, B & C); Fam. Zingiberaceae. The plant is an annual or biennial erect herb occurring throughout India and is widely cultivated for its rhizomes.



A. Plant

B. Cluster of fresh rhizomes

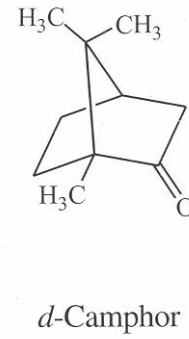
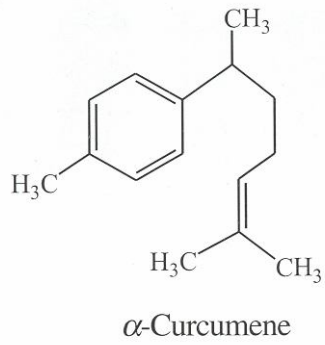


C. Dried transversely cut pieces of rhizomes
Curcuma aromatica Salisb.

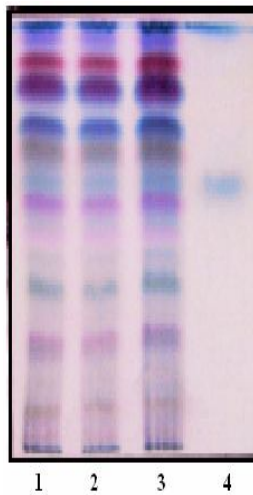
Chemical Constituents

Major

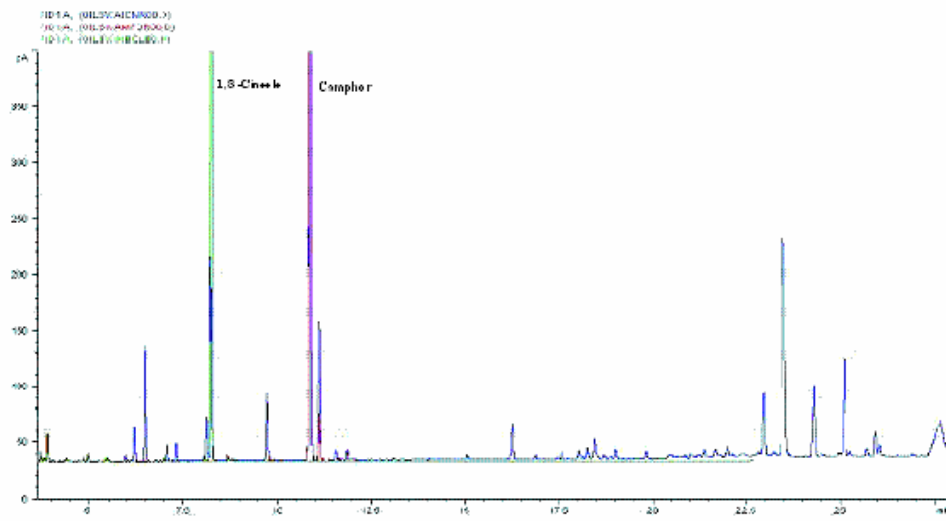
α -Curcumene (*ar*-curcumene), β -curcumene, *d*-camphor, α - and β -turmerone.



TLC/GLC Details



TLC profile of *n*-hexane extract of *Curcuma aromatica* rhizome. **1-3:** Test solution; **4:** Camphor standard.



GLC finger print profile of the essential oil of *Curcuma aromatica* rhizome.

