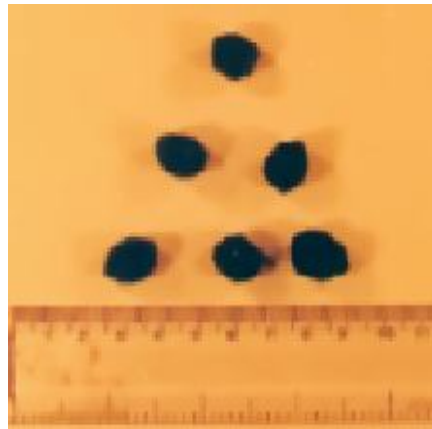


## 12 *Carissa carandas* Linn. (Karamarda)

Drug consists of the dried fruit of *Carissa carandas* Linn. (Plate 12.1 A & B); Fam. Apocynaceae. A tall, much branched thorny woody shrub distributed throughout drier parts of India ascending to 900 m in hills, frequently cultivated.



A. Flowering and Fruiting twig



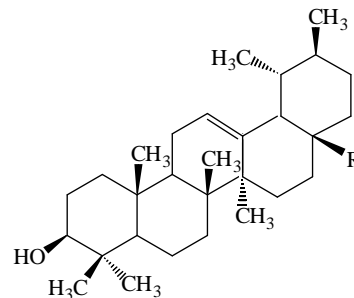
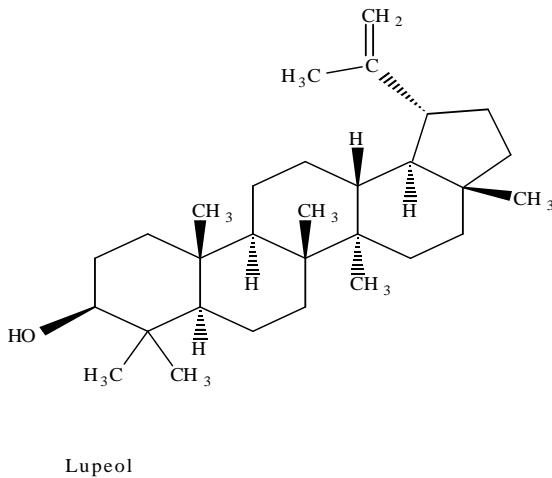
B. Dried fruits

Plate 12.1 *Carissa carandas* Linn.

### Chemical Constituents

#### Major

Carissol, carissic acid, ascorbic acid.



Carissol            R - CH<sub>3</sub>  
Carissic acid      R - COOH