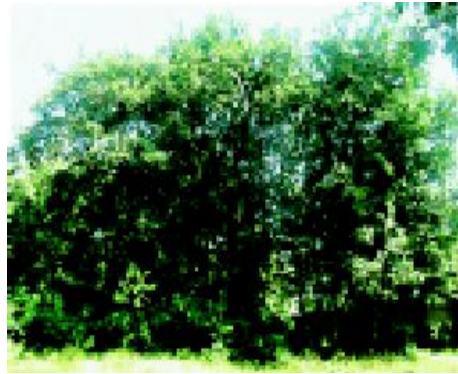


11 *Ficus benghalensis* Linn. (Nyagrodha)

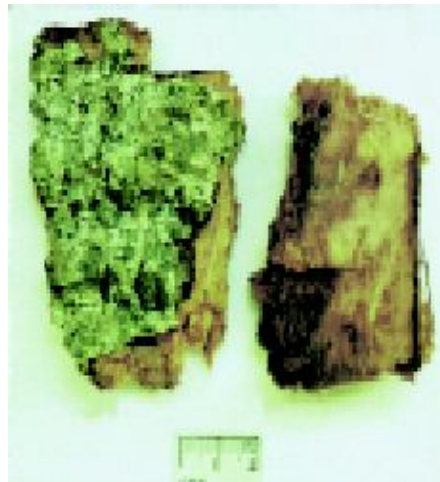
Drug consists of stem bark of *Ficus benghalensis* Linn. (A, B & C); Fam. Moraceae. A very large branching tree reaching a height of 20 m or more with a stout trunk and with numerous aerial roots arising from horizontally growing branches, several of which reach the soil; occurring throughout India.



A. Tree



B. Stout basal trunk



C. Dried bark

a. Outer surface

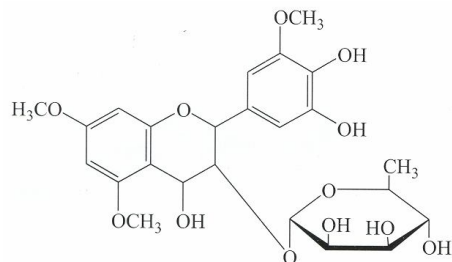
b. Inner surface

Ficus benghalensis Linn.

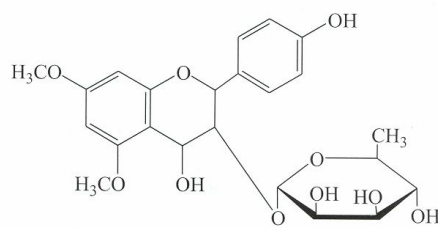
Chemical Constituents

Major

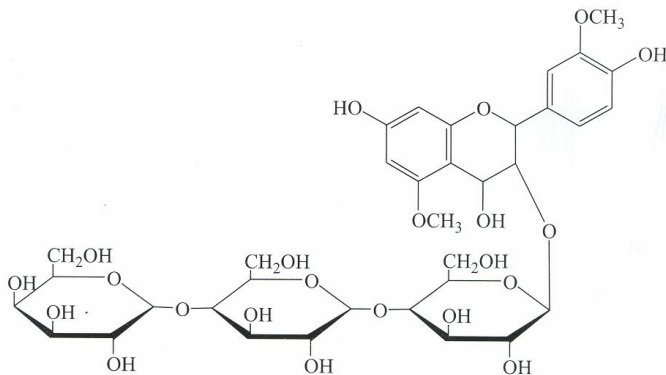
Bengalenoside, 3',5,7-trimethylether of delphinidin-3-O- α -L-rhamnoside, 5,7-dimethyl ether of pelargonidin-3-O- α -L-rhamnoside, 3',5-dimethyl ether of leucocyanidin-3-O- β -D-galactosylcellobioside, dimethyl ether of leucopelargonidin-3-O- α -L-rhamnoside; 20-tetratriacontene-2-one, pentatriacontan-5-one; caffeic acid.



3',5,7-Trimethyl ether of delphinidin-3-*O*- α -L-rhamnoside

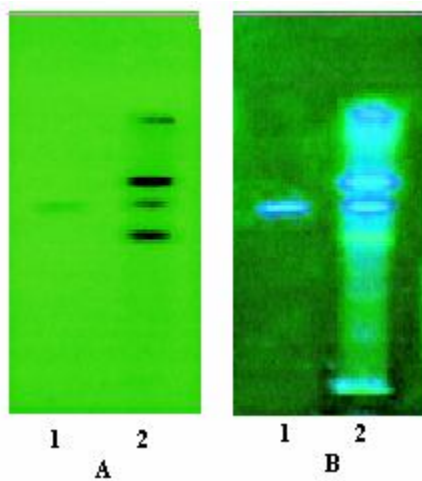


5,7-Dimethyl ether of pelargonidin-3-*O*- α -L-rhamnoside

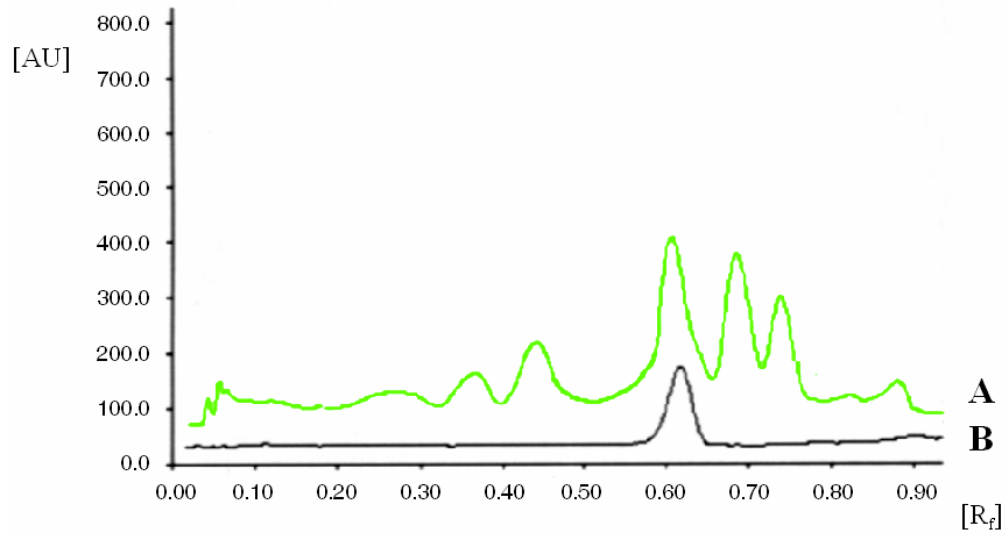


3',5-Dimethyl ether of leucocyanidin-3-*O*- β -D-galactosylcellobioside

TLC/HPTLC Details



TLC profile of test solution of processed methanol extract of *Ficus benghalensis* stem bark. **A.** UV 254 nm; **B.** UV 366 nm. **1:** Caffeic acid standard; **2:** Test solution.



HPTLC densitometric scan at 327 nm. **A**. Test solution of processed methanol extract of *Ficus benghalensis* stem bark; **B**. Caffeic acid standard.