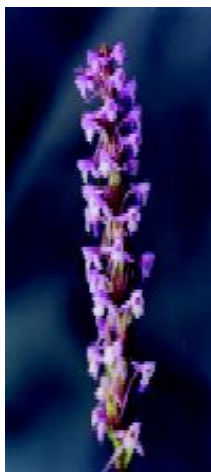


11 *Dactylorhiza hatagirea* (D.Don) Soo (Muñjatakah)

Drug consists of dried tuberous root of *Dactylorhiza hatagirea* (D.Don) Soo (A & B) (syn. *Orchis latifolia* auct. non Linn.); Fam. Orchidaceae. Plant is a terrestrial orchid, about 60 cm tall and distributed in Himalayas between 2800 to 4200 m from Kashmir to Sikkim and Arunachal Pradesh¹.



A. Flowering plant

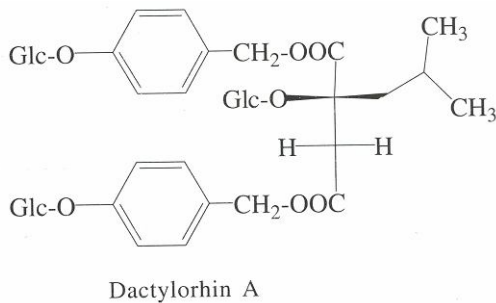
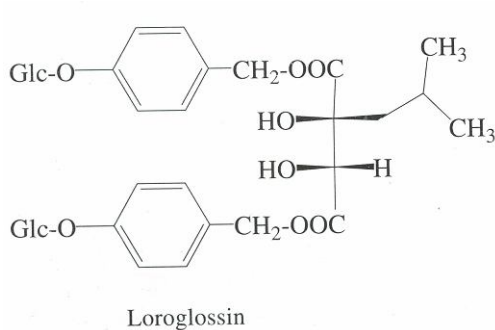
B. Tuberous root

Dactylorhiza hatagirea (D.Don) Soo

Chemical Constituents

Major

Glucosides of butanoic acid: dactylorhin A, loroglossin and militarine.

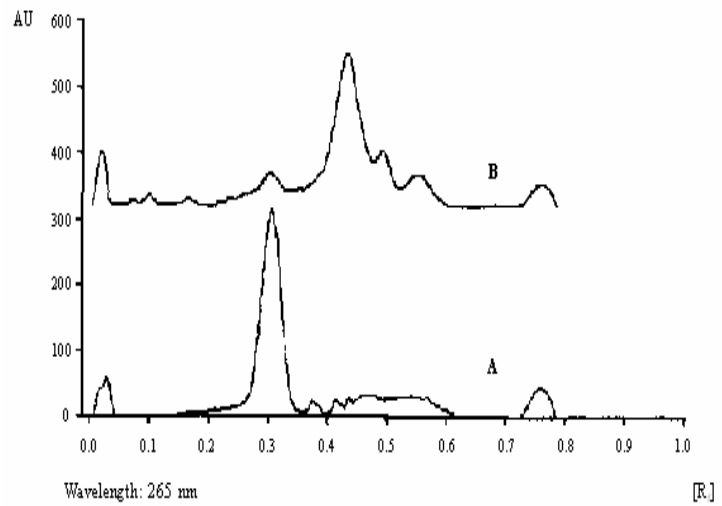


TLC/ HPLC Details



TLC profile of test solution of *Dactylorhiza hatagirea* tuberous root extract.

- 1: *p*-Hydroxybenzyl alcohol standard;
- 2: Test solution.



TLC densitometric scan at 265 nm.

- A. *p*-Hydroxybenzyl alcohol
- B. Test solution of *Dactylorhiza hatagirea* tuberous root extract.