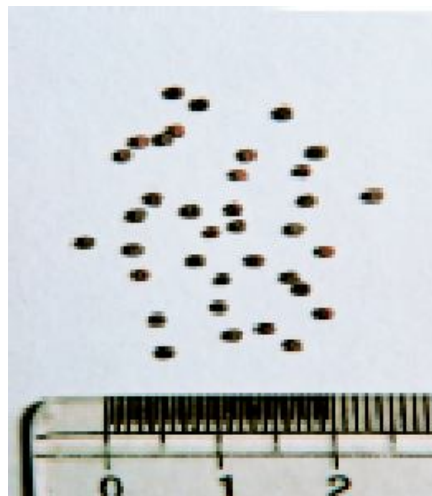


11 *Cleome gynandra* Linn. (Suvarcata-sveta)

Drug consists of dried seed of *Cleome gynandra* Linn. (syn. *C. pentaphylla* Linn.; *Gynandropsis gynandra* (Linn.) Briq.; *G. pentaphylla* (Linn.) DC.) (A & B); Fam. Capparidaceae. An erect herb, commonly found on roadsides and waste or cultivated lands throughout warmer parts of India.



A. A flowering and fruiting twig



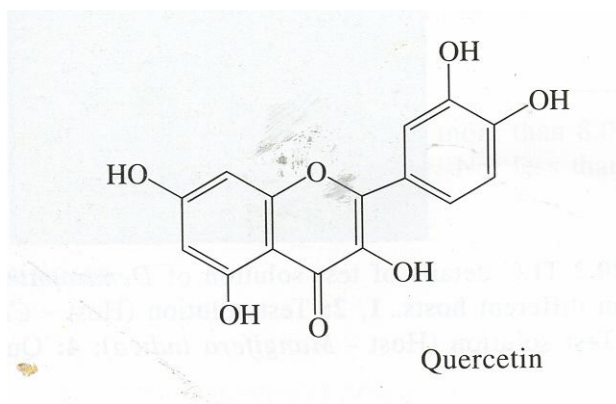
B. Dried seeds

Cleome gynandra Linn.

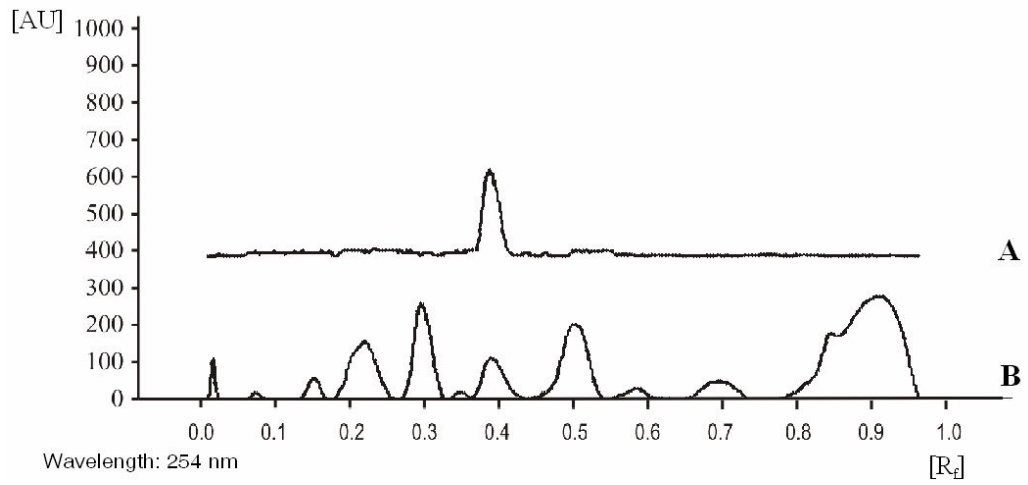
Chemical Constituents

Major

Luteolin.



HPTLC Details



Wavelength: 254 nm
HPTLC densitometric scan at 254 nm. **A.** Luteolin standard; **B.** Test solution of *Cleome gynandra* seed.