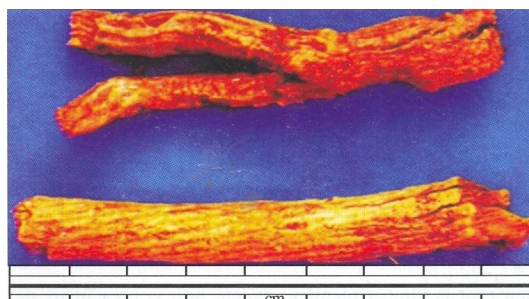
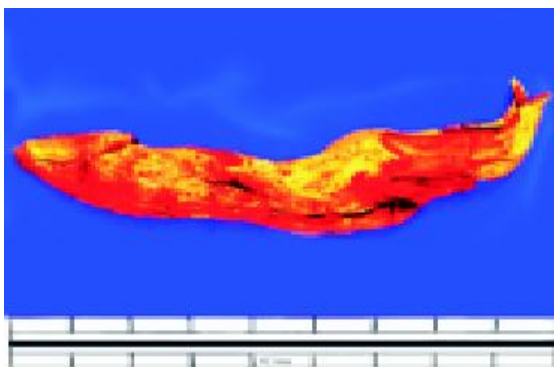


10 *Coscinium fenestratum* (Gaertn.) Colebr. (Kalambaka)

Drug consists of the dried stem and root of *Coscinium fenestratum* (Gaertn.) Colebr. (Plate 0.1 A & B); Fam. Menispermaceae. A large woody climber with stout stem and branches, occurring in the hills of Malabar region, particularly Western Ghats.



A. Stem

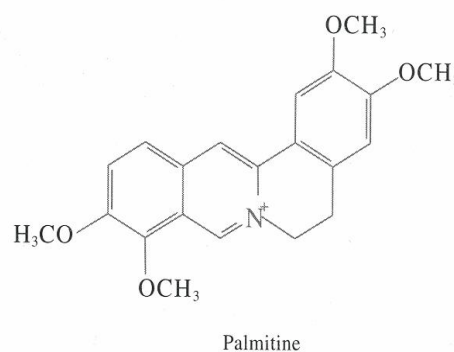
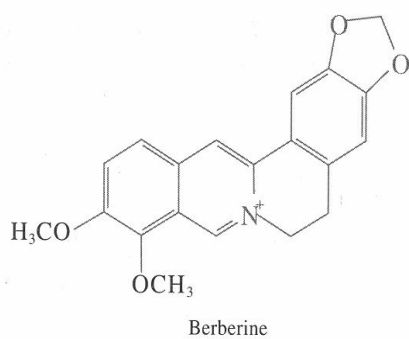
B. Root

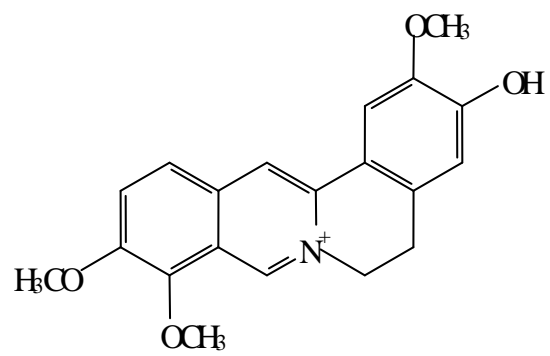
Plate 10.1 *Coscinium fenestratum* (Gaertn.) Colebr.

Chemical Constituents

Major

Berberine and protoberberine alkaloids.





Jatrorrhizine