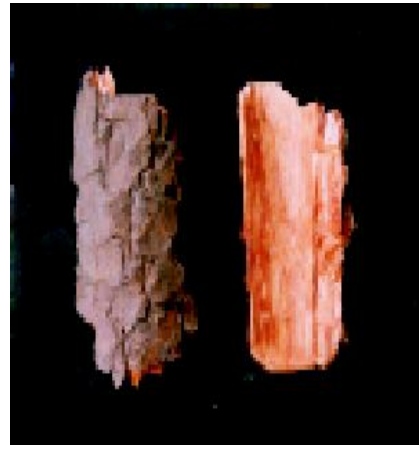


# 10 *Calophyllum inophyllum* Linn. (Punnaga)

Drug consists of dried stem bark of *Calophyllum inophyllum* Linn. (Plate 10.1 A & B); Fam. Clusiaceae. The plant is a moderate-sized evergreen tree, found along the western coastal regions of peninsular India and southwards and the Andamans.



A. Fruiting twig



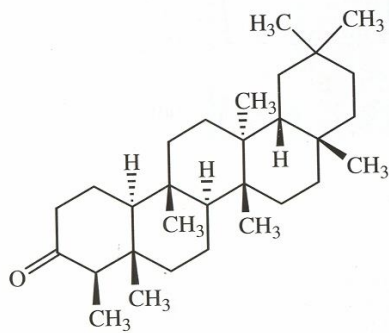
B. Dried stem bark  
a. Outer surface b. Inner surface

Plate 10.1 *Calophyllum inophyllum* Linn.

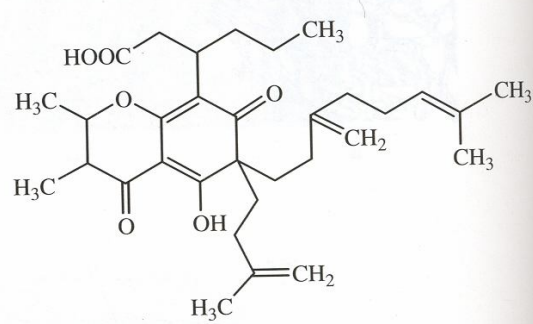
## Chemical Constituents

### Major

Triterpenoids : friedelin and friedelano.



Friedelin



Inophylloidyic acid