

# 10 *Eucalyptus globulus* Labill. (Tailapar6a)

Drug consists of dried leaves of *Eucalyptus globulus* Labill. (A & B); Fam. Myrtaceae. It is a large tree, up to a height of 90 m. It is an introduced species, now found cultivated successfully in various parts of the country at an elevation between 700-2000 m.



A. A twig



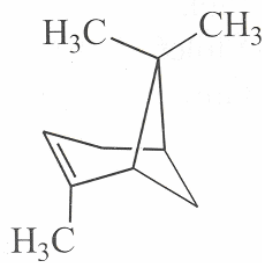
B. Flowering twig (enlarged view)

*Eucalyptus globulus* Labill.

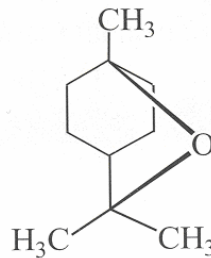
## Chemical Constituents

### Major

Essential oil containing 1, 8-cineole,  $\alpha$ -pinene, limonene,  $\alpha$ -terpineol,  $\beta$ -terpinyl acetate, aromadendrene, globulol,  $\alpha$ -cadinene.

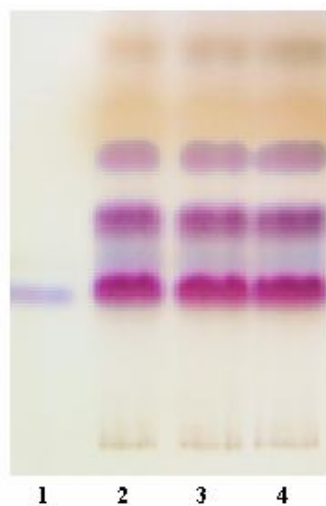


$\alpha$ -Pinene

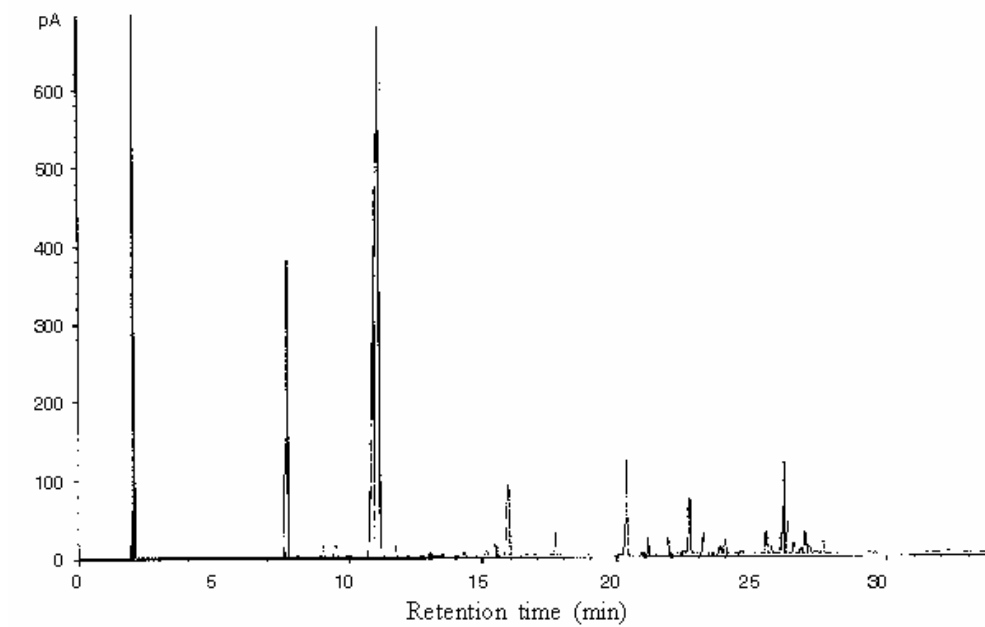


Cineole

## TLC/GLC Details



TLC profile of test solution of *n*-hexane extract of *Eucalyptus globulus* leaf. **1:** 1,8-Cineole standard; **2-4:** Test solution.



GLC fingerprint profile of essential oil of *Eucalyptus globulus* leaf along with  $\alpha$ -pinene and 1,8-cineole as reference.