

## 10 *Citrus aurantifolia* (Christm. & Panz.) Swingle

Drug consists of dried fruit rind of *Citrus aurantifolia* (Christm. & Panz.) Swingle (syn. *C. medica* Linn. var. *acida* (Roxb.) Hook.f.) (A & B); Fam. Rutaceae. A small bushy tree found growing wild in the warm valleys along the foot hills of Himalayas from Uttranchal to Sikkim, up to 1,250 m.



A. Flowering and fruiting twigs



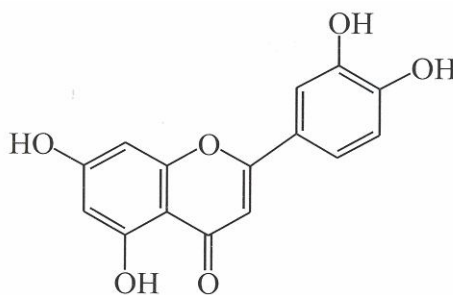
B. Dried fruit rind

*Citrus aurantifolia* (Christm. & Panz.) Swingle

### Chemical Constituents

#### Major

Limonene,  $\beta$ -pinene.



Luteolin

## GLC Details

