

## 70 EUODIA Forst. & Forst.f. (Rutaceae)

### SPECIES COVERED

*E. glabrifolia* (Champ.) Balakr. syn. *E. meliaefolia* (Hance ex Walpers) Benth.

*E. lunu-ankenda* (Gaertn.) Merrill syn. *E. roxburghiana* Benth.

*E. trichotoma* (Lour.) Planch. syn. *E. fraxinifolia* (Hook.) Benth.

*E. xanthoxyloides* F. Muell.

### OTHER ASPECTS COVERED

Regional and Other names

Habit and Habitat

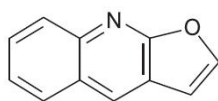
Properties and Uses Ascribed

Ethnobotanical studies

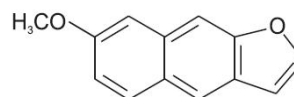
Chemical studies

Pharmacological and biological studies

### Major Bioactive Phytoconstituent of *Eulophia* Species



H<sub>3</sub>CO  
Dictamnine



H<sub>3</sub>CO  
OCH<sub>3</sub>  
Evolitrine