

## 7 ECLIPTA Linn. (Asteraceae)

### SPECIES COVERED

*E. alba* (Linn.) Hassk. syn. *E. prostrata* Roxb.; *E. erecta* Linn.

### OTHER ASPECTS COVERED

Regional and Other Names

Habit and Habitat

Ayurvedic Description

Therapeutic Uses Mentioned in Ayurvedic Pharmacopoeia

Properties and Uses Ascribed

Ethnobotanical Studies

Pharmacognostic studies

Chemical studies

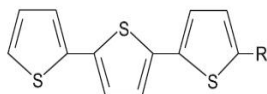
Pharmacological and biological studies

Clinical studies

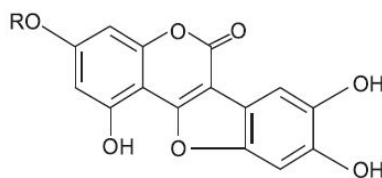


*E. alba* (Linn.) Hassk.

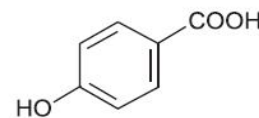
### Major Bioactive Phytoconstituents of *Eclipta* Species



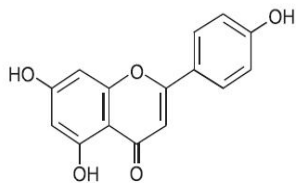
2-Formyl- $\alpha$ -terthienyl R=CHO  
 $\alpha$ -Terthienylcarbinol R=CH<sub>2</sub>OH



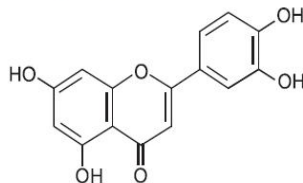
Wedelolactone R=CH<sub>3</sub>  
Desmethylwedelolactone R=H



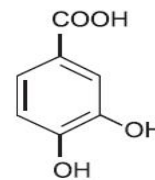
4-Hydroxybenzoic acid



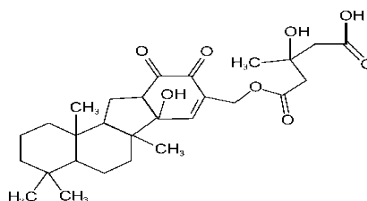
Apigenin



Luteolin



Protocatechuic acid



Dasyscyphin C