

## 66 EUCALYPTUS L' Herit. (Myrtaceae)

### SPECIES COVERED

*E. alba* Reinw. ex Blume

*E. amygdalina* Labill.

*E. calophylla* R.Br.

*E. camaldulensis* Dehnh.

syn. *E. rostrata* Schlecht.

*E. citriodora* Hook. syn. *E.*

*maculata* Hook. var.

*citriodora* Bailey

*E. cloezioana* F. Muell.

*E. globulus* Labill.

*E. kirtoniana* F. Muell.

*E. lanceolatus* L' Herit.

*E. maculata* Hook.

*E. melanophloia* F. Muell.

*E. microtheca* F. Muell.

*E. moluccana* Roxb. syn. *E. hemiphloia* F. Muell. ex Benth.

*E. multiflora* Poir. syn. *E. robusta* Sm.; *E. rostrata* Cav.

*E. naundina* Smith

*E. paniculata* Sm.

*E. pauciflora* Sieb. ex Spreng.

*E. pilularis* Sm.

*E. regnans* F. Muell. syn. *E. amygdalina* Labill. var. *regnans* F. Muell.

*E. resinifera* Sm.

*E. rudis* Endl.

*E. saligna* Sm.

*E. sideroxylon* A. Cunn.

*E. umbellata* Domin syn. *E. tereticornis* Sm.



*E. citriodora* Hook.



*E. globulus* Labill.

### OTHER ASPECTS COVERED

Regional and Other names

Habit and Habitat

Therapeutic Uses Mentioned in Ayurvedic Pharmacopoeia

Properties a-nd Uses Ascribed

Ayurvedic Description

Ethnobotanical studies

Pharmacognostic studies

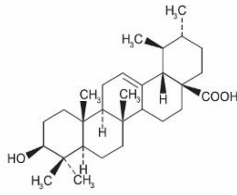
Chemical studies

Pharmacological and biological studies

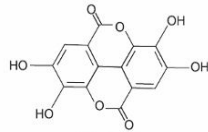
Clinical studies

Toxicological studies

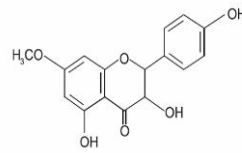
## Some Major Bioactive Phytoconstituents of *Eucalyptus* Species



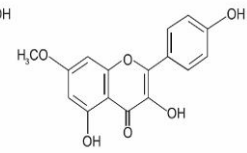
Ursolic acid



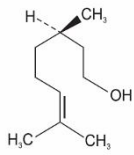
Ellagic acid



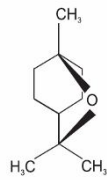
Aromadendrin 7-monomethyl ether  
(7-Methylaromadendrin)



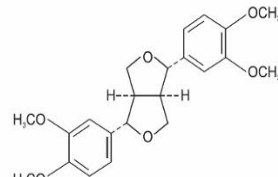
Kaempferol 7-monomethyl ether  
(7-Methylkaempferol)



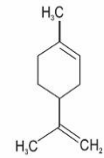
Citronellol



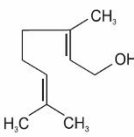
1,8-Cineole (Eucalyptol)



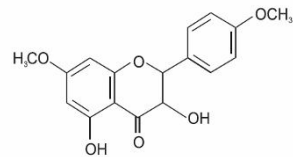
D-Eudesmin



Limonene



Geraniol



Aromadendrin 7,4' dimethyl ether