

56 DIPLOKNEMA Pierre (**Sapotaceae**)

SPECIES COVERED

D. butyracea (Roxb.) H.J. Lam. var. *butyracea* syn. *Bassia butyracea* Roxb.; *Madhuca butyracea* (Roxb.) Macbride

OTHER ASPECTS COVERED

Regional and other names

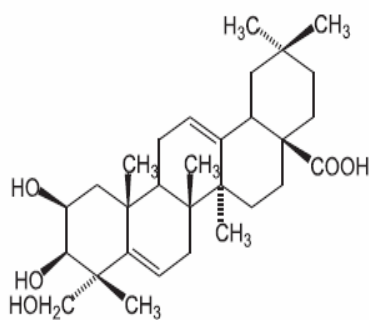
Habit and habitat

Properties and uses ascribed

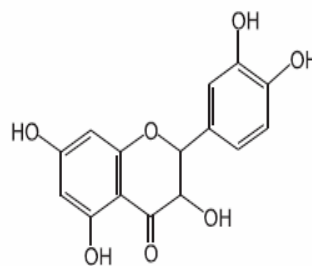
Chemical studies

Pharmacological and biological studies

Major Bioactive Phytoconstituents of *Diploknema* Species



Basic Acid



Taxifolin