

31 ENICOSTEMA Blume (**Gentianaceae**)

SPECIES COVERED

E. axillare (Lam.) Raynal syn. *Gentiana axillare* Lam.; *Enicostema hyssopifolium* (Willd.) Verdoorn; *E. littorale auct.* non Blume; *E. verticillatum* (Linn.) Engl.

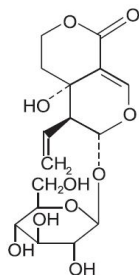
OTHER ASPECTS COVERED

Regional and Other Names
Habit and Habitat
Ayurvedic Description
Therapeutic Uses Mentioned in Ayurvedic Pharmacopoeia
Properties and Uses Ascribed
Ethnobotanical studies
Pharmacognostic studies
Chemical studies
Pharmacological and biological studies
Clinical studies

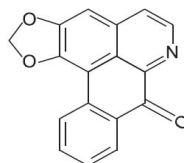


E. axillare (Lam.) Raynal

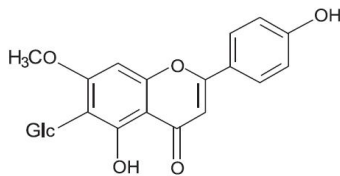
Major Bioactive Phytoconstituent of *Enhydra* Species



Swertiamarin



Liriodenine



Swertisin