

29 ENGELHARDTIA Leschen. ex Blume (**Juglandaceae**)

SPECIES COVERED

E. spicata Leschen. ex Blume var. **integra** (Kurz) Mann. ex Steenis syn. *E. colebrookiana* Lindl. ex Wall.

E. spicata Leschen. ex Blume var. *spicata* syn. *E. acerifolia* Blume

OTHER ASPECTS COVERED

Regional and Other Names

Habit and Habitat

Properties and Uses Ascribed

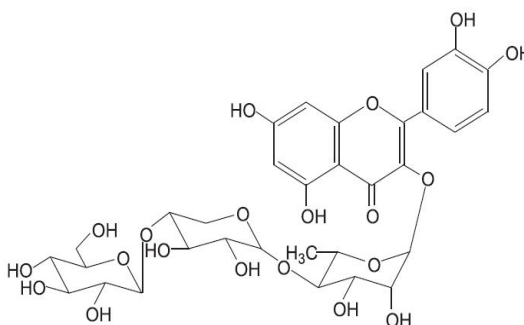
Ethnobotanical studies

Chemical studies

Pharmacological and biological studies

Toxicological studies

Major Bioactive Phytoconstituent of *Engelhardtia* Species



Quercetin-3-*O*-{ β -D-glucopyranosyl (1 \rightarrow 4)- β -D-xylopyranosyl(1 \rightarrow 4)}- α -L-rhamnopyranoside