

24 EMBELIA Burm.f., nom. cons. (Myrsinaceae)

SPECIES COVERED

E. basaal (Roem. ex Schult.) A.DC. syn. *Ardisia basaal* Roem. & Schult.; *Embelia robusta* auct. non Roxb.; *E. tsjeriam-cottam* auct. non (Roem. & Schult.) A.DC.

E. floribunda Wall.

E. ribes Burm.f.



E. ribes Burm.f.



E. tsjeriam - cottam A.DC.

E. tsjeriam - cottam A.DC. syn. *E. robusta* C. B. Clarke, non Roxb.

E. viridiflora Scheff. syn. *E. drupacea* (Dennst.) Almeida & Almeida

OTHER ASPECTS COVERED

Regional and Other Names

Habit and Habitat

Ayurvedic Description

Therapeutic Uses Mentioned in Ayurvedic Pharmacopoeia

Properties and Uses Ascribed

Ethnobotanical Studies

Pharmacognostic Studies

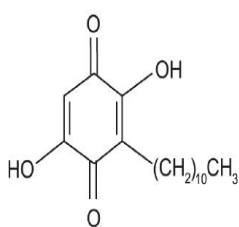
Chemical studies

Pharmacological and biological Studies

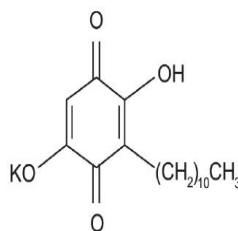
Clinical Studies

Toxicological Studies

Major Bioactive Phytoconstituents of *Embelia* Species



Embelin



Potassium embelate